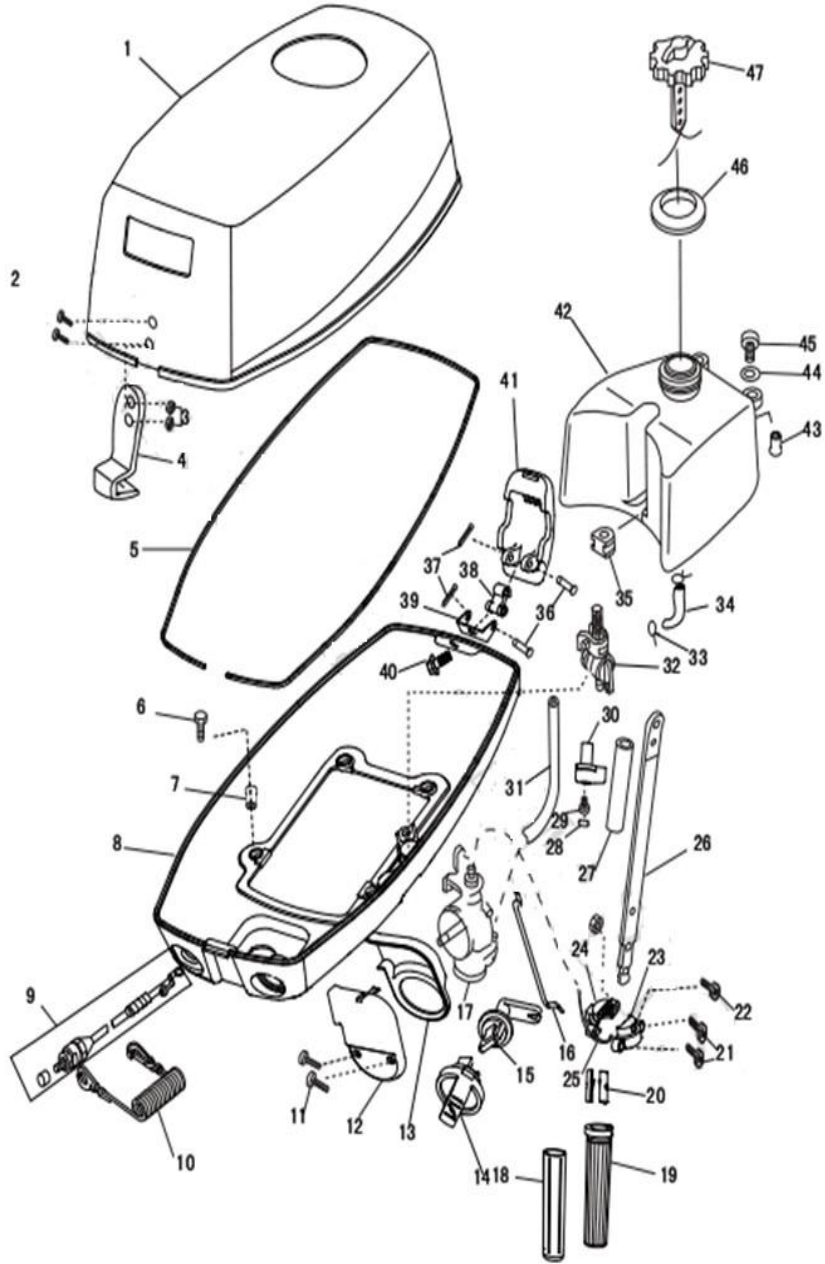
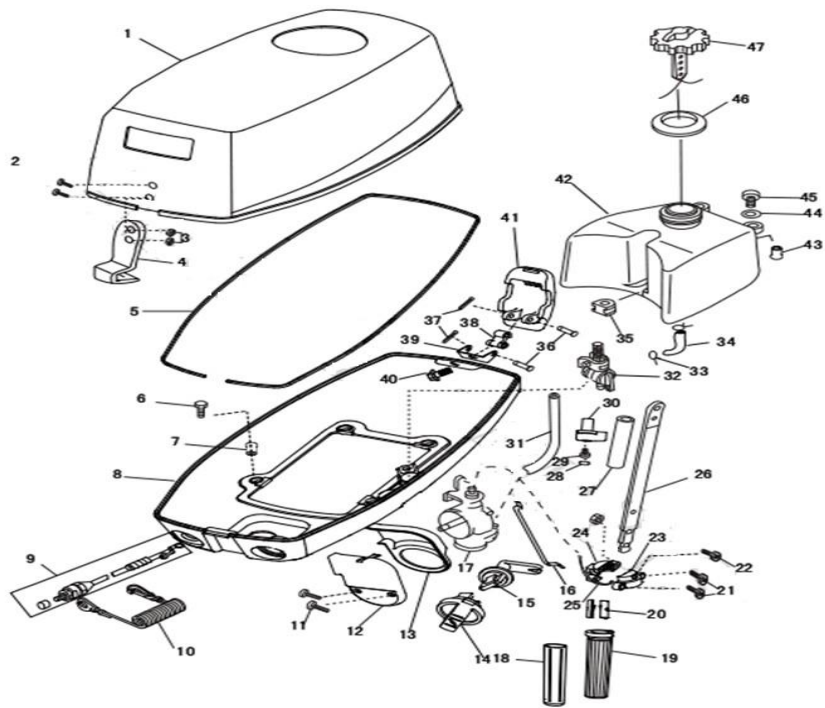


T2.5 parts code

FIG.1 Cowling Fuel 顶罩、燃油部件

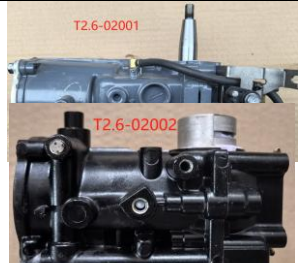


SER	FACTORY CODE	PARTS NAME	Chinese name
1-1	T2.6-01001	TOP COWLING ASSY	消音罩组件
	T2.6-01001-1	TOP COWLING	消音罩
	T2.6-01001-2	GRAPHIC SET	左右标贴
	T2.6-01001-3	GRAPHIC FRONT	后标贴
1-2	T5-01005	BOLT,PAD HEAD	十字槽盘头螺钉和平垫圈组合件
1-3	T9.8-08012		1型非金属嵌件六角锁紧螺母
1-4	T2.6-01004	HOOK	前挂钩
1-5	T2.6-01005	U,SEAL	密封条
1-6	T5-02023	FLANGE BOLT	六角头螺栓和平垫圈组合件
1-8	T2.6-01008	COWLING,BOTTOM	底罩
1-9	T5-07033	ENGINE STOP SWITCH ASSY	熄火开关组件
1-10	T15-11033	WIRE,SWITCH	应急熄火拉绳
1-11	T2.6-01011	BOLT,PAD HEAD	十字槽盘头螺钉
1-12	T2.6-01012	SILENCER,CAP	进气消音器盖
1-13	T2.6-01013	SILENCER,INTAKE	进气消音器座
1-14	T2.6-01014	KNOB,CHOKE,INTAKE	阻风门开关旋钮
1-15	T2.6-01015	KNOB,CHOKE	阻风门开关摇臂
1-16	T2.6-01016	ROD,CHOKE	阻风门拉杆
1-17	T2.6-03001	CARBURETOR UNIT	化油器组件
1-18	T2.6-01018	GRIP,STEERING HANDLE	操纵手柄套
1-19	T2.6-01019	RUBBER,HANDLE	操纵手柄
1-20	T2.6-01020	TUBE	半圆支撑块
1-21	T2.6-01021	BOLT,PAD HEAD	十字槽小盘头螺钉
1-22	T5-03040	BOLT,PAD HEAD	十字槽盘头螺钉
	T40E-10012	NUT	1型六角螺母
1-23	T2.6-01023	THROTTLE CABLE, CAP	油门线固定座盖
1-25	T2.6-01025	THROTTLE CABLE ASSY	油门拉线
1-26	T2.6-01026	STEERING HANDLE	操纵臂
1-27	T2.6-01027	PROTECTOR,OUTER	热缩管
1-29	T2.6-01029	BOLT,PAD HEAD	十字槽盘头螺钉
1-30	T2.6-01030	KNOB,OIL SWITCH	燃油开关旋钮
1-30-1	T2.6-01030-1	BOLT,PAD HEAD	十字槽小盘头螺钉
1-31	T2.6-01031	BOLT,PAN HEAD	油管
1-32	T2.6-01032	COVER, PLUG CAP	燃油开关组件
1-33	T2.6-01033	STAY,PIPE	管夹



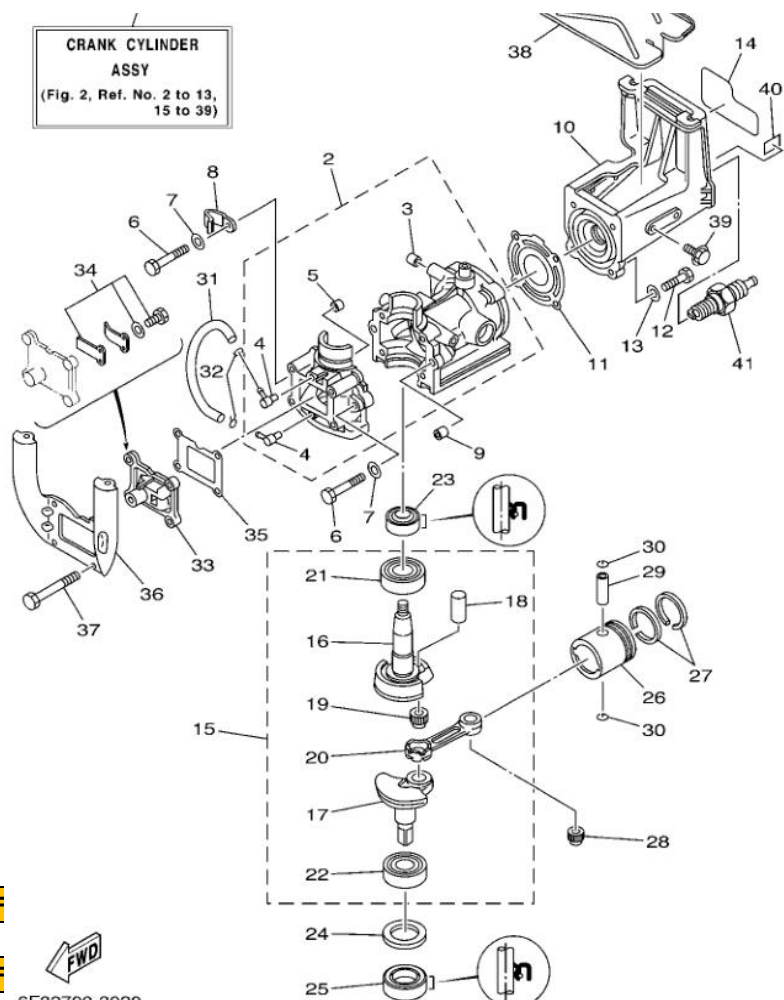
1-34	T2.6-01034	PIPE,FUEL	连接油管
	T15-06010	CLIP	管夹
1-35	T2.6-01035	WASHER,FUEL TANK	内油箱减振套
1-36	F6-13006-1	PIN,SUPPORT	带槽台阶销轴
1-37	T15-14040	PIN,COTTER	开口挡圈
1-38	F6-13006-5	LOCKING ROD	连接块
1-39	F6-13006-4	LOCKING BRACKET	支架1
1-40	T30-09003	FLANGE BOLT	六角头螺栓和平垫圈组合件
1-41	T2.6-01041	LOCKING KNOB, TOP	合罩锁紧扣
1-42	T2.6-01042	FUEL TANK	内油箱组件
	T2.6-01042-1		内油箱
1-43	T2.6-01043	SEAT,RUBBER	台阶衬套
1-44/45	T15-01008	WASHER	六角头螺栓和平垫圈组合件
1-46	F6-08003		燃油箱盖橡胶密封环
1-47	T3-01019	CAP,FUEL TANK	内油箱盖组件
	T2.6-01048		油门旋扭标贴
	T2.6-01049		阻风门旋扭标贴
	T2.6-01050		横放警告标贴
	T15-09004		扎带

FIG.2 CYLINGER CRANKCASE 气缸体曲轴连杆

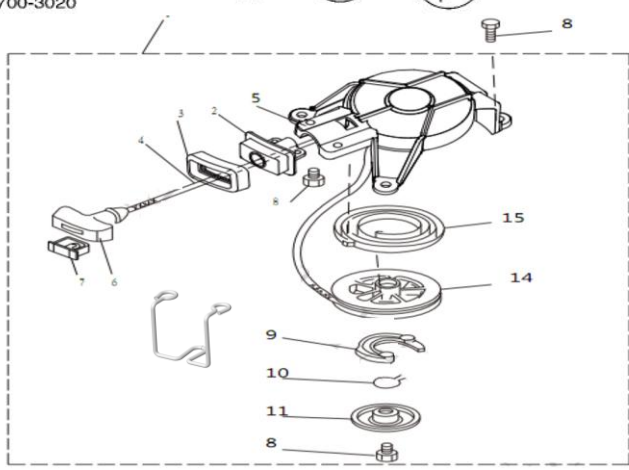


SER	FACTORY CODE	PARTS NAME	Chinese name
	T2.6-02000	POWERHEAD ASSY	动力头总成(含启动器、化油器)
2-1	T2.6-02001	CRANK CYLINDER ASSY	曲轴、气缸体曲轴箱总成
2-2	T2.6-02002	CRANKCASE ASSY	气缸体曲轴箱组件(含缸套、定位销)
2-3	T2-02003	PLUG,TAPER	堵头
2-4	T15-02004	PIPE,JOINT	回油管弯头
2-6/7	T2-02006	BOLT, WITH WASHER	六角头螺栓和平垫圈组合件
2-8	F6-02022	CLAMP	管夹
2-9	T2.6-02009	PIN, DOWEL	空心定位销
2-10	T2.6-02010	HEAD,CYLINDER 1	气缸盖

CRANK CYLINDER ASSY
(Fig. 2, Ref. No. 2 to 13, 15 to 39)



FWD
6F82700-3020



2-11	T2.6-02011	GASKET, CYLINDER HEAD 1	气缸垫
2-12/13	T2-02012	BOLT, WITH WASHER	六角头螺栓和平垫圈组合件
2-14		GRAPHIC, REAR	无
2-15	T2.6-02015	CRANKSHAFT ASSY	曲轴连杆组件
2-23	F6-04017	OIL SEAL	油封
2-24	T2-02024	WASHER, PLATE	曲轴推力垫圈
2-25	T2-02025	OIL SEAL	油封
2-26	T2.6-02026	PISTON (STD)	活塞
2-27	T2.6-02027	PISTON RING SET (STD)	活塞环组件
	T2.6-02027-1		第一道活塞环
	T2.6-02027-2		第二道活塞环
2-28	T2.6-02028	BEARING	连杆小端轴承
2-28-1	T2.6-02028-1	WASHER, PLATE	连杆小头垫圈
2-29	T2.6-02029	PIN, PISTON	活塞销
2-30	T2.6-02030	CIRCLIP	活塞销挡圈
2-31	T5-02013	HOSE(L118)	回油管
2-32	T15-02007	CLIP	管夹Φ7
2-33	T2.6-02033	REED VALVE ASSY	簧片阀组件
2-34		REED SET	阀片配件
2-35	T2-02035	GASKET, VALVE SEAT	簧片阀垫片
2-36	T2-02036	STAY 1	启动器支架
2-37	T3-02009	BOLT	六角法兰面螺栓
2-38	T2-02038	PROTECTOR, FUEL TANK	隔热板
2-39	T15-06012	BOLT, FLANGE	六角头螺栓
2-41	T15-02026	SPARK (NGK B7HS)	火花塞
SER	FACTORY CODE	PARTS NAME	Chinese name
3-1	T2.6-03001	CARBURETOR UNIT	化油器组件
SER	FACTORY CODE	PARTS NAME	Chinese name
4-1	T2.6-04001	STARTER ASSY	启动器总成
4-2	T2.6-04002	GUIDE, ROPE	启动绳滑套
4-3	T5-04016	SEAL, RUBBER	拉绳导座密封圈
4-4	T2.6-04004	ROPE, STARTER	启动绳
4-5	T2.6-04005	CASE, STARTER	启动器壳体
	T2.6-04005-1	COLLAR	衬套
4-6	T15-07018	HANDLE, STARTER	起动手柄(含嵌件)
4-7	T15-07019	COVER	起动手柄盖
4-8	T15-02025	BOLT	六角头螺栓和平垫圈组合件
4-9	T2.6-04009	PAWL, DRIVE	棘爪
4-9-1	T3-04010	SPRING	压盖扭转弹簧
4-10	T3-04008	SPRING, DRIVE PAWL	驱动爪弹簧
4-11	T2.6-04011	SHAFT, STARTER	启动盘压盖
4-12	T9.8-06012	SCREW, FLAT HEAD	十字槽沉头螺钉

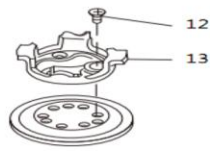
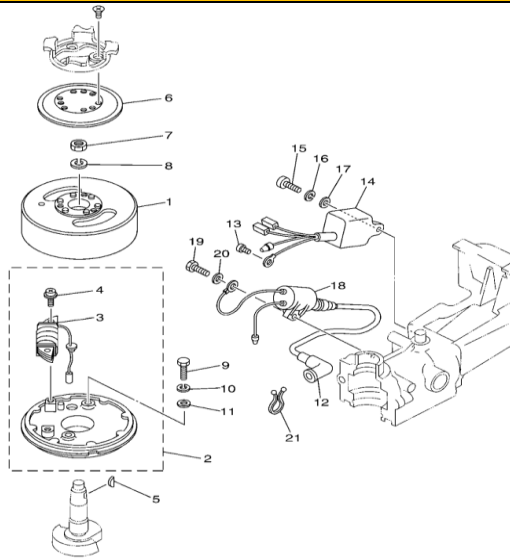


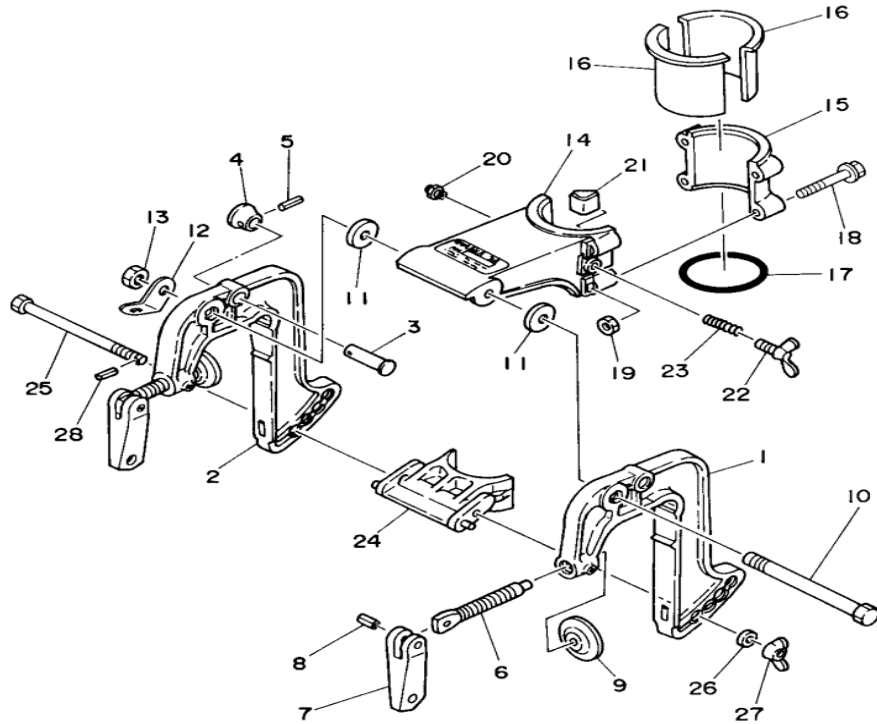
FIG.5 GENERATOR 发电机部件



FWD
6F83700-C050

序号	全新图号	英文名称	零件名称
4-13	T2.6-04013	PULLEY,STARTER	起动连接器
4-14	T2.6-04014	DRUM,SHEAVE	启动盘
4-15	T2.6-04015	SPRING,STARTER	平面蜗卷弹簧
4-16	T2.6-04016	BRACKET, FILTER	油门拉线支架
4-17	T15-02025	BOLT, WITH WASHER	六角头螺栓和平垫圈组合件
5-1	T2-05001	ROTOR ASSY	飞轮
5-2	T2-05002	BASE ASSY	定子组件
	T2-05002-1	STAY	线圈支座
5-3	T2-05003	COIL,CHARGE	充电线圈
	T5-10010	RUBBER BUSH	橡胶衬套
5-4	T9.8-03016	SCREW, PAN HEAD	十字槽盘头螺钉和弹簧垫圈组合件
5-5	T5-05020	KEY, WOODRUFF	半圆键
5-6	T2-05006	COVER,HOLE	飞轮连接盘
5-7	T3-05018	NUT	飞轮螺母
5-8	T30-20028	WASHER,SPRING	平垫圈
5-9/10/11	F6-09036	BOLT WASHER,SPRING	六角头螺栓和弹垫、平垫组合件
5-12	T2-05012	PLUG CAP ASSY	高压包帽
5-13	T40E-10021	BOLT	十字槽盘头螺钉
5-14	T2-05014	C.D.I. UNIT ASSEMBLY	CDI
5-15/16/17	T15-02025	SCREW, PAN HEAD	六角头螺栓和平垫圈组合件
5-18	T2-05018	IGNITION COIL ASSY	高压包
5-19/20	T15-02025	BOLT	六角头螺栓和平垫圈组合件
5-21	T2-05021	CLAMP	线夹

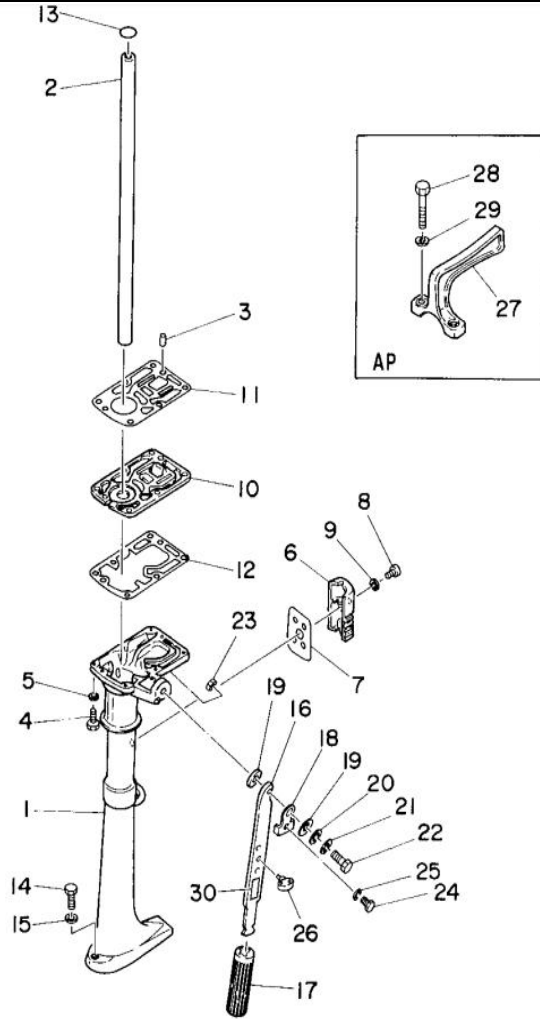
FIG. 6 BRACKET 支架




6A10010-4060

序号	全新图号	英文名称	零件名称
	T2-06000	BRACKET ASSY	悬挂支架组件
	T2-06001-0	LEFT BRACKET CLAMP ASSY	左支架组件
6-1	T2-06001	BRACKET, CLAMP	左支架
	T2-06002-0	RIGHT BRACKET CLAMP ASSY	右支架组件
6-2	T2-06002	BRACKET, CLAMP	右支架
6-3	T2-06003	SHAFT, STOPPER	支撑销
6-4	T2-06004	KNOB, STOPPER	支撑销手柄
6-5	T2-06005	PIN, SPRING	弹性圆柱销
6-6	T3-08013	SCREW, TRANSOM CLAMP	舵板锁紧螺杆
	T15-18010		1型非金属嵌件六角锁紧螺母
6-7	T15-14006	HANDLE, TRANSOM CLP	舵板锁紧手柄
6-8	T15-14007	PIN, SPRING TYPE	90°半沉头半空心铆钉
	T9.8-08012		1型非金属嵌件六角锁紧螺母
6-9	T5-10013	PAD, TRANSOM CLAMP	舵板锁紧压盘
6-10	T2-06010	BOLT	六角头螺栓
6-11	T30-07011	WASHER, PLATE	大垫圈
6-12	T5-10019	PLATE, CLAMP BRACKET	拉环
6-13	T15-06008	NUT	1型非金属嵌件六角锁紧螺母
6-14	T2-06014	BRACKET, SWIVEL	前回转支架
	T2-06014-1		铭牌标贴
6-15	T2-06015	BRACKET, SWIVEL 2	后回转支架
6-16	T2-06016	BUSHING, PIVOT SHAFT	回转支架衬套
6-17	T2-06017	O-RING	O型圈
6-18	T9.8-06022	BOLT, WITH WASHER	六角头螺栓和平垫圈组合件
6-19	T15-12010	NUT, U-FLANGE	1型六角螺母
6-20	T15-15001	NIPPLE, GREASE	油杯
6-21	T2-06021	PLATE, FRICTION	锁紧块组件
6-22	T2-06022	BOLT, WING	碟形螺栓
6-23	T2-06023	SPRING, COMPRESSION	压缩弹簧
6-24	T2-06024	RECEIVER, THRUST	起翘限位撑架
6-25	T2-06025	BOLT, RECEIVER	六角头螺栓
6-26	T2-06026	WASHER, PLATE	平垫圈
6-27	T2-06027	NUT, WING	蝶形螺母
6-28	T15-10014	PIN, SPRING	1型非金属嵌件六角锁紧螺母

FIG. 7 UPPER CASING 水上壳体

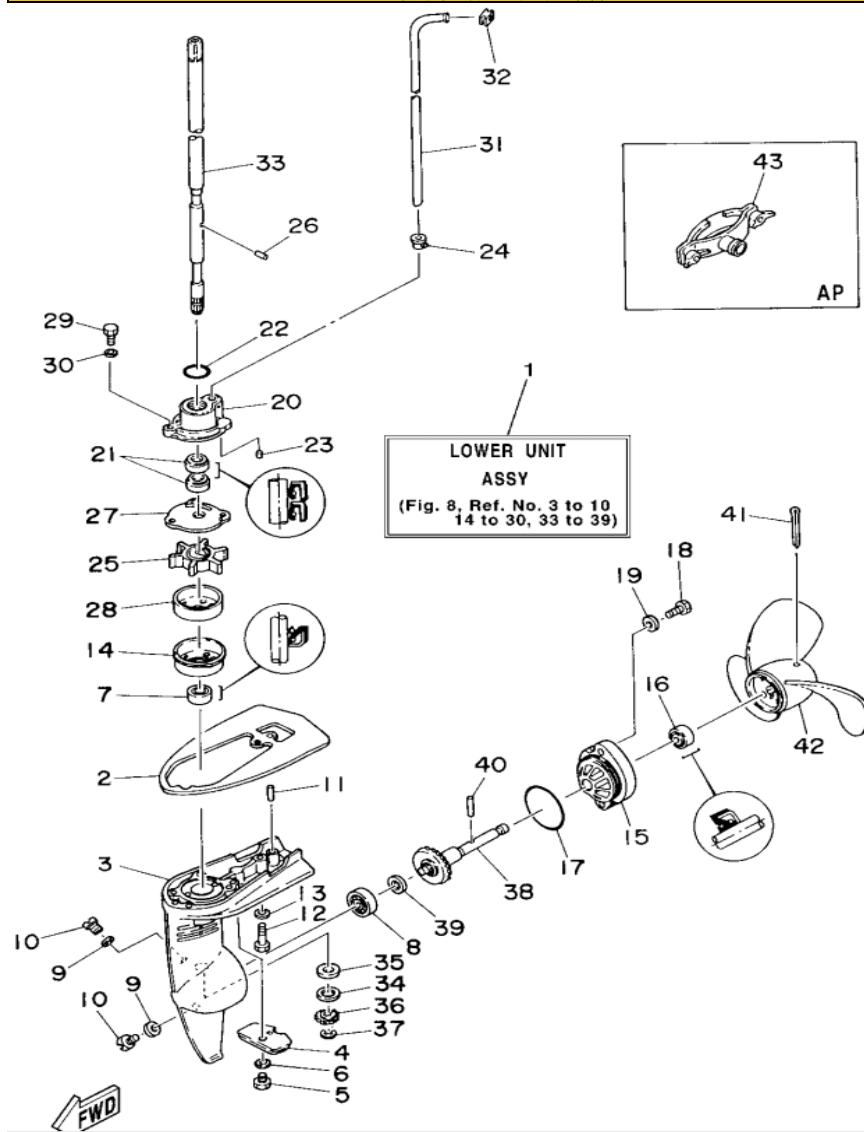


序号	全新图号	英文名称	零件名称
7-1	T2.6-07001	CASING,UPPER	中间箱体
7-2	T2-07002	GASKET, UPPER CASING	传动轴套
7-3	T2.6-07003	PIN, DOWEL	圆柱销
7-4/5	T15-02017	BOLT	六角头螺栓和平垫圈组合件
7-6	T2-07006	COVER,UPPER CASING	排气盖
7-7	T2-07007	GASKET, UPPER CASING	排气盖密封垫
7-8/9	T2-07008	SCREW, PAN HEAD	十字槽盘头螺钉和平垫圈组合件
7-10	T2.6-07010	GUIDE,EXHAUST	接座
	T2.6-07010-1	GUIDE	导气板
	T30-08008		十字槽盘头螺钉
7-11	T2-07011	GASKET, EXHAUST PIPE	动力下垫片
7-12	T2-07012	GASKET, EXHAUST PIPE	中间座下垫片
7-13	T2-07013	O-RING	O型圈
7-14/15	T15-02017	BOLT	六角头螺栓和平垫圈组合件
7-16	T2.6-01026	STEERING HANDLE	操纵臂
7-17	T2.6-01018	GRIP,STEERING HANDLE	操纵手柄套
	T2.6-01019	RUBBER,HANDLE	操纵手柄
7-18	T2-07018	WASHER	操纵臂限位垫片
7-19	T2-07019	WASHER,PLATE	铜垫圈
7-20	T2-07020	WASHER,PLAIN	平垫圈
7-21/22	T2-07021	BOLT	六角头螺栓和弹簧垫圈组合件
7-23	T15-06008	NUT	1型非金属嵌件六角锁紧螺母
7-24	T15-06012	BOLT	六角头螺栓
7-25	T40E-10003	WASHER, SPRING	弹簧垫圈
7-26	T2-07026	HOLDER, SHEAR PIN	备用件套
7-26-1	T2-07026-1		圆柱销
7-26-2	T2-07026-2		开口销
7-30	T2-07030		标贴



6F83700-C070

FIG. 8 LOWER CASING & DRIVE 水下壳体、驱动部件



序号	全新图号	英文名称	零件名称
8-1	T2.6-08001	LOWER UNIT ASSY	减速箱总成
8-2	T2-08002	PLATE	压水板
8-3	T2.6-08003	CASING, LOWER	减速箱体
8-3-1	T2.6-08003-1		传动轴上轴套
8-3-2	T2-08003-2		传动轴中间轴套
8-3-3	T2-08003-3		传动轴下轴套
8-4	T5-11007	ANODE	阳极
8-5	T5-11008	BOLT, FLANGE	六角法兰面螺栓
8-6	T15-18013	WASHER, INTERNAL TOOTH	内锯齿锁紧垫圈
8-7	T5-02018	OIL SEAL	油封
8-8	T2-08008	BEARING	深沟球轴承
8-9	T15-17009	GASKET	放油螺塞垫圈
8-10	T15-17008	PLUG, STRAIGHT SCREW	放油螺塞(不带磁)
8-11	T2.6-08011	PIN, DOWEL	圆柱销
8-12/13	T15-02017	BOLT	六角头螺栓和平垫圈组合件
8-14	T2-08014	PROTECTOR, OIL SEAL	水泵壳
8-15	T2-08015	CAP, LOWER CASING	轴承座组件
8-15-1	T2-08015-1		轴承座
8-15-2	T2-08015-2		衬套
8-16	T5-02018	OIL SEAL	油封
8-17	T2-08017	O-RING	O型圈
8-18/19	T5-02023	BOLT	六角头螺栓和平垫圈组合件
8-20	T2.6-08020	COVER, WATER PUMP HOUSING	水泵座
8-21	T2-08021	OIL SEAL	油封
8-22	T2-07013	O-RING	O型圈
8-23	T2.6-08023	PIN, DOWEL	圆柱销
8-24	T2-08024	DAMPER, WATER SEAL 2	进水管下密封套
8-25	T2-08025	IMPELLER	水泵叶轮
8-26	T5-11029	PIN, DOWEL	圆柱销
8-27	T2-08027	OUTER PLATE, CARTRIDGE	水泵壳体垫片
8-28	T2-08028	INSERT, CARTRIDGE	水泵壳体座圈
8-29/30	T2-08029	BOLT	六角头螺栓和平垫圈组合件
8-31	T2.6-08031	TUBE, WATER	水管
8-32	T5-11034	DAMPER, WATER SEAL	水管橡胶套
8-33	T2.6-08033	DRIVE SHAFT ASSY	传动轴组件
8-34	T5-11039	WASHER, PLATE	主动齿垫圈
8-35	T2-08035-1	SHIM(T:0.30MM)*{UR}*	主动齿调整垫圈
	T2-08035-2	SHIM(T:0.40MM)*{UR}*	主动齿调整垫圈
	T2-08035-3	SHIM(T:0.50MM)*{UR}*	主动齿调整垫圈
8-36	T2-08036	PINION	主动齿
8-37	T2-08037	CIRCLIP	开口挡圈
8-38	T2-08038	GEAR	螺旋桨轴与齿轮组合
8-39	T2-08039-1	SHIM(T:0.30MM)*{UR}*	前进挡齿轮调整垫片
	T2-08039-2	SHIM(T:0.40MM)*{UR}*	前进挡齿轮调整垫片
	T2-08039-3	SHIM(T:0.50MM)*{UR}*	前进挡齿轮调整垫片
8-40	T2-07026-1	PIN, STRAIGHT	圆柱销
8-41	T2-07026-2	PIN, COTTER	开口销
8-42	T2-08042	PROPELLER	螺旋桨